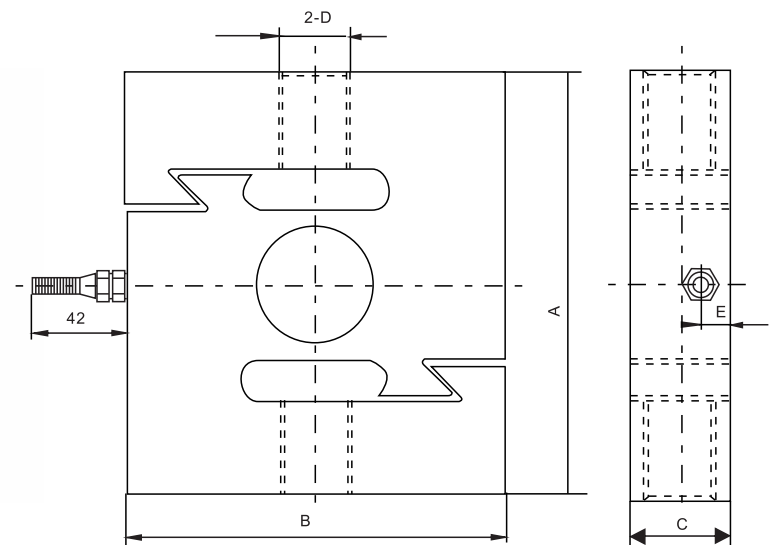
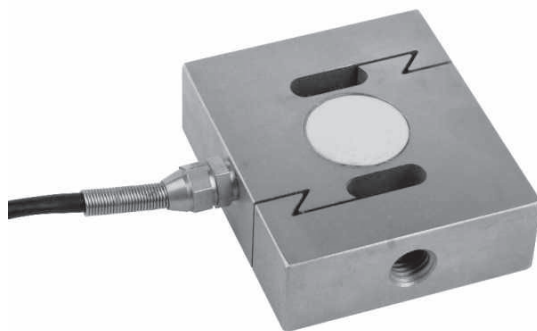


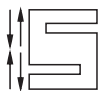


DEL/DEL-A/-SS/-ASS Loadcell

DEL/DEL-A/-SS/-ASS



| Rated Load (t) | A | B | C | D | E |
|------------------------------|-----|-----|----|---------|-----|
| 0.1,0.2,0.25 0.3,0.5,0.75 | 80 | 70 | 19 | M12 | 9.5 |
| 1,1.5 | 80 | 70 | 25 | M12 | 7 |
| 2,3.5 | 108 | 95 | 25 | M18x1.5 | 5.5 |
| 7.5,10 | 178 | 130 | 51 | M30x2 | 7 |
| 15,20 | 190 | 160 | 60 | M39x2 | 7 |



Crane scale,blending scale,packing scale, electromechanical scale,special testing device

TECHNICAL PARAMETER OAP version 4Wires:Exc+(Blue);Exc-(Black);Sig+(White);Sig-(Red)

| | | | |
|------------------------|---|--------------------------------|-----------------------------|
| Rated capacities(Emax) | 0.1,0.2,0.25,0.3,0.5,0.75,1,1.5,2,3,5,7.5,10,15,20t | Temperature range, compensated | -10°C~+40°C |
| Sensitivity | 2.0±0.002mV/V | Temperature range, operating | -30~+70°C |
| Total error | ±0.05%F.S | Maximum safe overload | 120%F.S |
| Creep error (30min) | ±0.03%F.S | Ultimate overload | 250%F.S |
| Zero balance | ±1%F.S | Excitation,recommended | 10~12V DC |
| TC ZERO | ±0.03%F.S/10°C | Excitation,maximum | 15V DC |
| TC SPAN | ±0.03%F.S/10°C | Protection class | IP65(0.1~5t)IP68(7.5~20t) |
| Input resistance | 400±20Ω | Construction | Alloy Steel Stainless Steel |
| Output resistance | 352±3Ω | Cable | Length:6m |
| Insulation resistance | ≥5000MΩ | | Diameter: φ 5mm |

Keli CEE

ul. Przeskok 53
63-400 Ostrów Wielkopolski

tel./fax. +48 62 592 42 78
e-mail: info@keli-cee.pl

www.keli-cee.pl