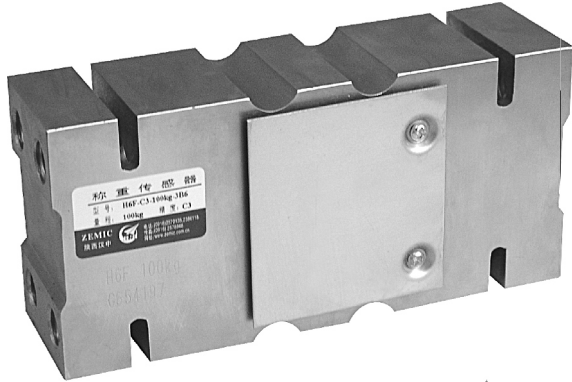


H6F



- H6F load cells are available in the capacities 50kg~2000kg.
- Alloy steel construction, potted by adhesive inside, oil proof, waterproof, anti-corrosive gas and medium making it suitable for all kinds of environments.
- Single point with parallel beam, suitable for electronic scales, platform scales, belt scales and other electronic weighing devices.
- Max. platform size:
50kg~200kg 400×400mm
250kg~500kg 600×800mm
750kg~2000kg 1200×1200mm

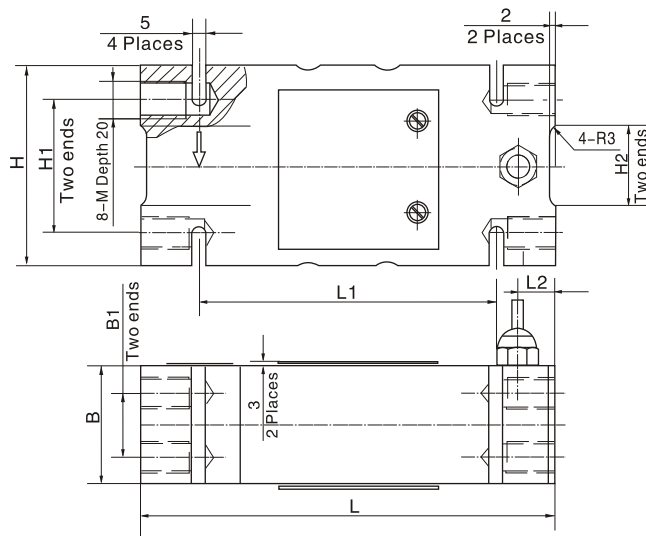
Features

- Capacity: 50kg~2000kg
- High accuracy
- Alloy steel construction
- Low profile and easy installation

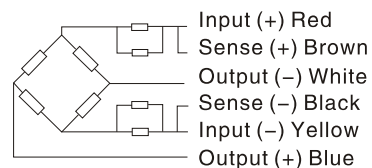
| Specifications | | | |
|------------------------------------------|------------------|---------------------------------------------------|-------------------------|
| Capacity | kg | 50/100/150/200/250/300/400/500/750/1000/1500/2000 | |
| Accuracy | | C2 | C3 |
| Maximum number of verification intervals | n _{max} | 2000 | 3000 |
| Minimum load cell verification interval | v _{min} | E _{max} /5000 | E _{max} /10000 |
| Combined error | (%FS) | ≤ ±0.030 | ≤ ±0.020 |
| Creep | (%FS/30min) | ≤ ±0.024 | ≤ ±0.016 |
| Temperature effect on sensitivity | (%FS/10°C) | ≤ ±0.017 | ≤ ±0.011 |
| Temperature effect on zero | (%FS/10°C) | ≤ ±0.023 | ≤ ±0.015 |
| Output sensitivity | (mv/v) | 2.0±0.2/2.0±0.002 | |
| Input resistance | (Ω) | 384±4/400±20 | |
| Output resistance | (Ω) | 351±2.0 | |
| Insulation resistance | (MΩ) | ≥5000(50VDC) | |
| Zero balance | (%FS) | 1.5 | |
| Temperature, compensated | (°C) | -10~+40 | |
| Temperature, operating | (°C) | -35~+65 | |
| Excitation, recommended | (V) | 5~12(DC) | |
| Excitation, max | (V) | 18(DC) | |
| Safe overload | (%FS) | 150 | |
| Ultimate overload | (%FS) | 300 | |
| Corner correction | | 0.02%load value/100mm | |

Note: output sensitivity of S1 type is 2.0±0.002mv/v, input resistance is 400±20

Outline Dimension mm(inch)



| Capacity Dimension | 50kg~200kg | 250kg~500kg | 750kg~2t |
|--------------------|------------|-------------|-----------|
| B | 44(1.73) | 60(2.36) | 76(2.99) |
| B1 | 24(0.94) | 36(1.42) | 46(1.81) |
| H | 75(2.95) | 95(3.74) | 125(4.92) |
| H1 | 50(1.97) | 70(2.76) | 95(3.74) |
| H2 | 30(1.18) | 30(1.18) | 65(2.56) |
| L | 156(6.14) | 146(5.75) | 176(6.93) |
| L1 | 112(4.4) | 110(4.33) | 110(4.33) |
| L2 | 14(0.55) | 11(0.43) | 24(0.94) |
| M | M12-7H | M12-7H | M16-7H |



Wiring:

Adopt shielded, 6 conductor cable: Φ5mm
Standard cable length: 3m